



COASTAL ELECTRICS

EC003509

CAPABILITIES STATEMENT

ABN: 28 645 254 256

Address: Unit 2/20 Pedlar Circuit,

Rockingham, WA 6168

Telephone Number: +61 8 9527 1509

Email Address: admin@coastalelectrics.com.au

Web Address: www.coastalelectrics.com.au



COMPANY INFORMATION

Registered Name	Coastal Electrics WA PTY LTD
Trading Name	Coastal Electrics
ABN	28 645 254 256
ACN	623 637 678
Head Office	Unit 2/20 Pedlar Circuit Rockingham, WA 6168
Port Hedland Branch	3 Oxide Way Port Hedland, WA 6721
Telephone Number	+61 8 9527 1509
Email Address	admin@coastalelectrics.com.au
Web Address	www.coastalelectrics.com.au
Key Personnel	Matthew Guy - Managing Director Peter Hanssen - Project Manager
Electrical Contractors License	EC03509
Insurances	Public & Products Liability Insurance is held to the value of \$20,000,000 with Berkley Insurance Australia, Policy No. 202008-0583 BIA Workers Compensation is held to the value of \$50,000,000 with Allianz Australia Insurance Limited, As per the WA Workers Compensation Act, Policy No. WWH0091096





COMPANY BACKGROUND

Coastal Electrics was first established in 1988 by Andrew Guy. Coastal Electrics mainly focused on the residential market in its first years of operation before migrating into the commercial and industrial sectors in the early 2000's. Since then Coastal Electrics has established itself as a reputable electrical company offering a diverse range of services across multiple fields of the industry including residential, commercial, industrial and mining.

With a qualified workforce, fleet of specialist vehicles and modern equipment we can cater to all your electrical requirements and utilise our extensive experience to deliver a tailored electrical service. A strong emphasis is placed on working with our clients from start to finish to ensure that their desired outcome is achieved. As a business we encourage our personnel to use their technical skills and practical experience to think laterally and explore all possible options.

Our Team

Coastal Electrics recognise employees as the company's most valuable assets and therefore we are committed to providing them with ongoing training, development and support. Coastal Electrics retains quality employees by providing a mixture of in-house and external training as well as development and support workshops to bring together new employees. Employees are continually improving their skills in their respective fields of the industry. The training and development of employees has allowed the company to grow and provide quality work across the electrical industry. Keeping our employees satisfied with the level of training they receive ensures that the company maintains high performing, cohesive and loyal employees. As a family run business one of our key focuses is family so where possible we provide family friendly hours and rosters to help satisfy our employees.

Coastal Electrics have strong equal opportunity values, with apprentices and qualified tradesmen from various cultural and religious backgrounds. We value each other's diverse balance of experience and knowledge, working together in a non-discriminatory environment. Coastal Electrics strongly believes in the importance of training apprentices in the electrical industry and has had over 15 successfully trained apprentices to date. Wherever possible, Coastal Electrics employ local team members to ensure local knowledge is readily available and sustained within the company.





VISION STATEMENT

Mission

To deliver an unmatched electrical service to our clients through maintaining the highest industry standards in safety and quality, whilst building long term sustainable relationships with our clients.

Vision

To achieve a desirable reputation by being the most respected, sought after electrical contractor and providing valued services throughout the electrical industry.

Our Values

Safety:

Passionately committed to maintaining a safe and healthy environment throughout our business

Quality:

We are committed to providing a high-quality service by consistently meeting requirements the first time and strive for continuous improvement of our work processes

Integrity:

We uphold our reputation for integrity in the workplace and provide an ethical work environment for all our employees

Innovation:

Through inventive processes and unique solutions, we provide unmatched value to our clients. We continually challenge ourselves to improve our processes and procedures

Sustainability:

In all that we do, we are conscious of the impact that our work has on the environment. We help our clients do the same by providing efficient and effective solutions on all our projects





WORK FORCE

Coastal Electrics has a diverse and skilled workforce consisting of a project manager, supervisors, tradespeople and support staff with a mixture of expertise across industrial and mining sectors. We have a team of 22 employees to draw from and the capability to upscale at short notice to 25+ personnel depending on project requirements. We offer consistency of people and continuity of service, committing the same personnel to projects from start to finish.

Our highly skilled, service orientated workforce consistently produce safe, reliable and quality of work. Combined with our competitive rates allows us to deliver an efficient cost-effective outcome to our clients.

Training & Skills

Coastal Electrics operates an effective employee management process which incorporates careful monitoring of our employees' capabilities, to ensure we supply fully qualified personnel with the experience and skill set to suit each project. Our workforce is continually trained to maintain their skills and develop their individual capabilities, which enables us to expand our services to grow our business.

Regular Training for Our Employees Includes:

- * Telecommunications
- * Forklift
- * Confined Spaces
- * Supervisor Training
- * Safety & Risk Management Training
- * Safe Systems of Work
- * Working at Heights
- * Elevated Work Platform
- * CPR, LVR & First Aid
- * Industry Inductions
- * Apprenticeships and Mentoring

Services

Design, Installation & Commissioning

Coastal Electrics is experienced at delivering a comprehensive electrical services across a range of industry specific applications.

- * Fixed plant E&I construction
- * Substation, transformer & switchyard installations
- * HV, LV, ELV control, instrument & communications cabling & terminations
- * Instrumentation & calibration
- * HV & LV switchboards
- * Fiber optic cabling & terminations
- * HV, LV and communications testing and auditing

Maintenance & Repairs

Our maintenance and repair services keep our clients' assets operating at peak performance, reducing operational costs, optimising reliability & extending life of equipment.

- * Modifications, upgrades, overhauls, rebuilds & repairs
- * Maintenance & repairs of HV & LV infrastructure
- * 24/7 breakdown response and technical support
- * Development and implementation of preventative maintenance programs
- * Condition monitoring and assessment
- * Evaluation of diagnostic data
- * Asset performance & efficiency improvements

Workshop

Our fully equipped workshop allows us to assemble and fabricate components prior to onsite installation.

- * Switchboard maintenance, repairs and reconfiguration (HV and LV)
- * Electrical assembly of distribution boards, switchboards and other custom enclosures
- * Transportable substation modifications
- * Clean, inspection, testing and repairs of lighting, generators and mobile electrical plant





PROJECTS – EXAMPLE OF OUR WORK

Client:

BEC Engineering - FMG
Anderson Point

Capability:

Installation & Commission

Value:

\$160,000

Responsibilities:

T45 Balance Machine PLC
Upgrade

Personnel:

8



Coastal Electrics provided the installation service & commissioning support for the Schneider M580 PLC Migration project which was completed on multiple t45 balance machines at Anderson Point. This included ELV cable installation, terminations, IO checking & PLC replacement.

Client:

Sage Automation – FMG
Anderson point

Capability:

Installation & Commission

Value:

\$250,000

Responsibilities:

Control System Upgrade
Ore Car Jacking Systems

Personnel:

14



Coastal Electrics provided the installation service & commissioning support for the control systems upgrade on jack systems OP1200 & OP1400. This included the installation of LV cabling, ELV cabling, communications cabling, migration of existing Eurogamma system to Siemens PLC and PLC panel fabrication.





PROJECTS – EXAMPLE OF OUR WORK

Client:

Calibre - FMG Cloudbreak

Capability:

Installation & Commission

Value:

\$175,000

Responsibilities:

OPF CCTV Implementation

Personnel:

10



Coastal Electrics provided the installation service to install over 75 cameras throughout the Ore Processing Facility. This included the installation of LV cabling, telecommunications cabling & electrical enclosures.

Client:

YULU – FMG Anderson
Point

Capability:

Installation & Commission

Value:

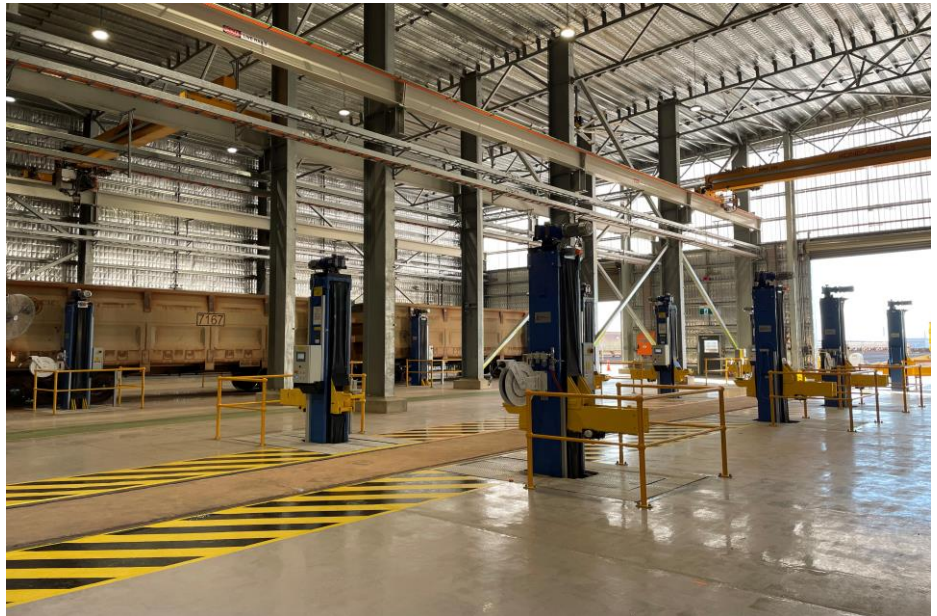
\$1,000,000

Responsibilities:

E&I Construction RSM
Workshop Extension

Personnel:

18



Coastal Electrics completed the E&I package associated with extending the RSM Workshop this included the installation of 2 jack systems, LV cabling, ELV cabling & communications cabling. Along with commissioning support for the OEM & FMG.





PROJECTS – EXAMPLE OF OUR WORK

Client:

FMG – Christmas Creek &
Cloudbreak

Capability:

Installation & Commission

Value:

\$275,000

Responsibilities:

Power Station PLC Upgrade
& CCTV Installation

Personnel:

12



Coastal Electrics provided the installation service to install & commission over cameras 35 throughout the Christmas Creek & Cloudbreak Power Stations. This included the installation of LV cabling, fibre optic cabling & electrical enclosures.

